

MONTHLY MEMBERSHIP PROGRESS REPORT

LOCATION WASHINGTON

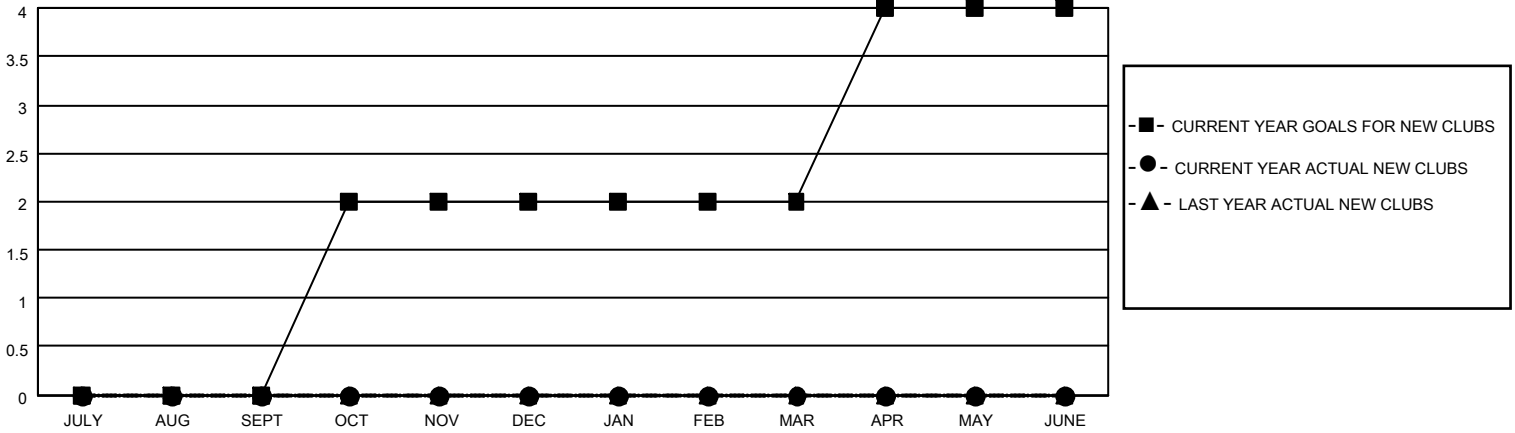
District 19 B

Results as of: 6/30/2023

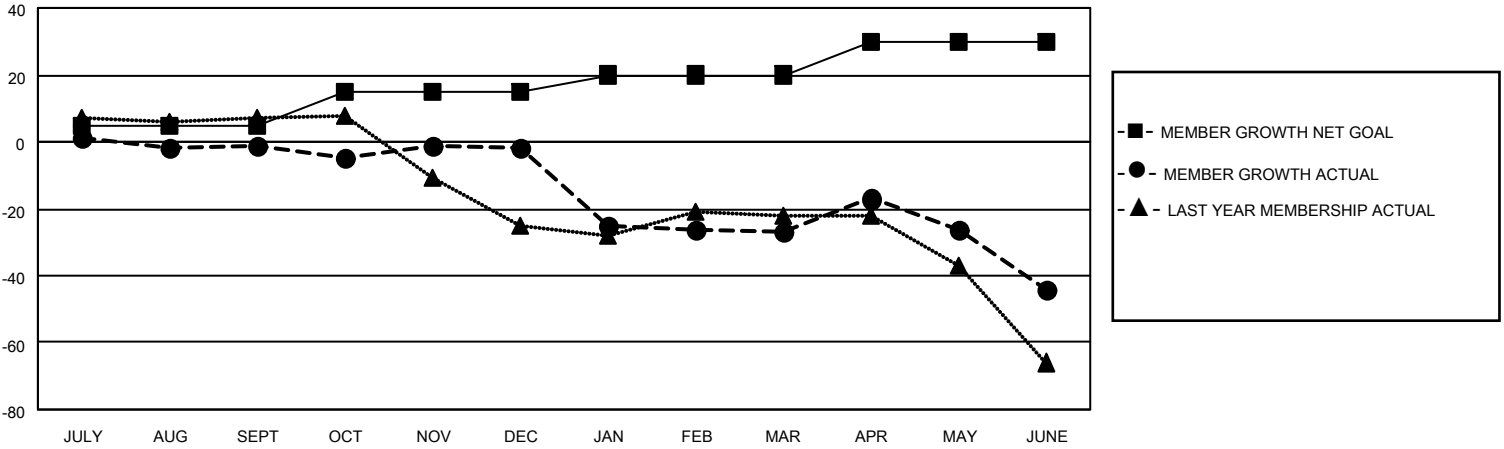
Clubs			
RESULTS FOR 2022-2023			
QUARTER	NEW CLUB GOAL	NEW CLUBS	DROPPED CLUBS
JULY/AUG/SEPT	0	0	0
OCT/NOV/DEC	2	0	0
JAN/FEB/MAR	0	0	1
APR/MAY/JUNE	2	0	2

Members			
RESULTS FOR 2022-2023			
QUARTER	MEMBER GROWTH NET GOAL	MEMBER GROWTH ACTUAL	DROPPED MEMBERS ACTUAL (including transfers)
JULY/AUG/SEPT	5	21	20
OCT/NOV/DEC	10	14	14
JAN/FEB/MAR	5	12	33
APR/MAY/JUNE	10	33	34

GOALS AND ACTUAL NEW CLUBS CUMULATIVE



GOALS AND ACTUAL MEMBERS CUMULATIVE



DROPPED CLUBS: 3	
DROPPED MEMBERS	
DECEASED	11
CLUB CANCELLED	13
OTHER	77
TOTAL	101

18 CLUBS OF 26 ADDED 1 OR MORE NEW MEMBERS

[CLICK HERE FOR CUMULATIVE MEMBERSHIP DATA](#)

<u>GENDER DISTRIBUTION</u>	
MALE	299 (55.37%)
FEMALE	239 (44.26%)
NON BINARY	0 (0.00%)
PREFER NOT TO ANSWER	2 (0.37%)
TOTAL FAMILY UNIT MEMBERS	114
FAMILY MEMBERS PAYING HALF DUES	59